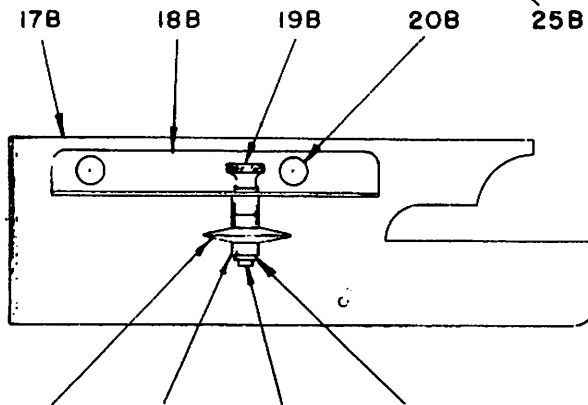
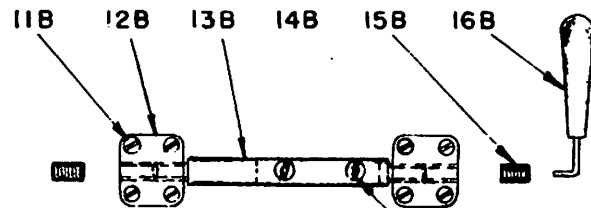
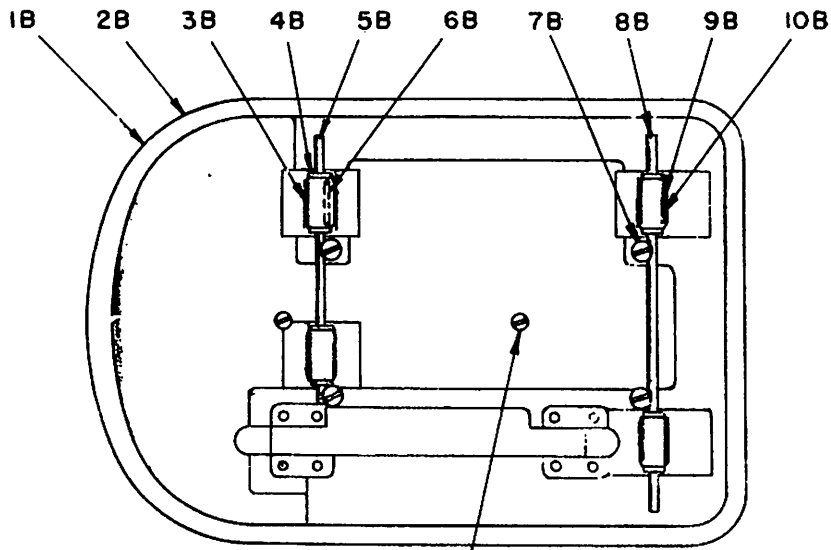


**EASTMAN**  
**ADJUSTABLE BEVEL**  
**CARPET CUTTING ATTACHMENT**

**INSTRUCTION SHEET**  
**AND**  
**PARTS LIST**

**EASTMAN MACHINE COMPANY**  
779 WASHINGTON STREET, BUFFALO 3, N. Y.

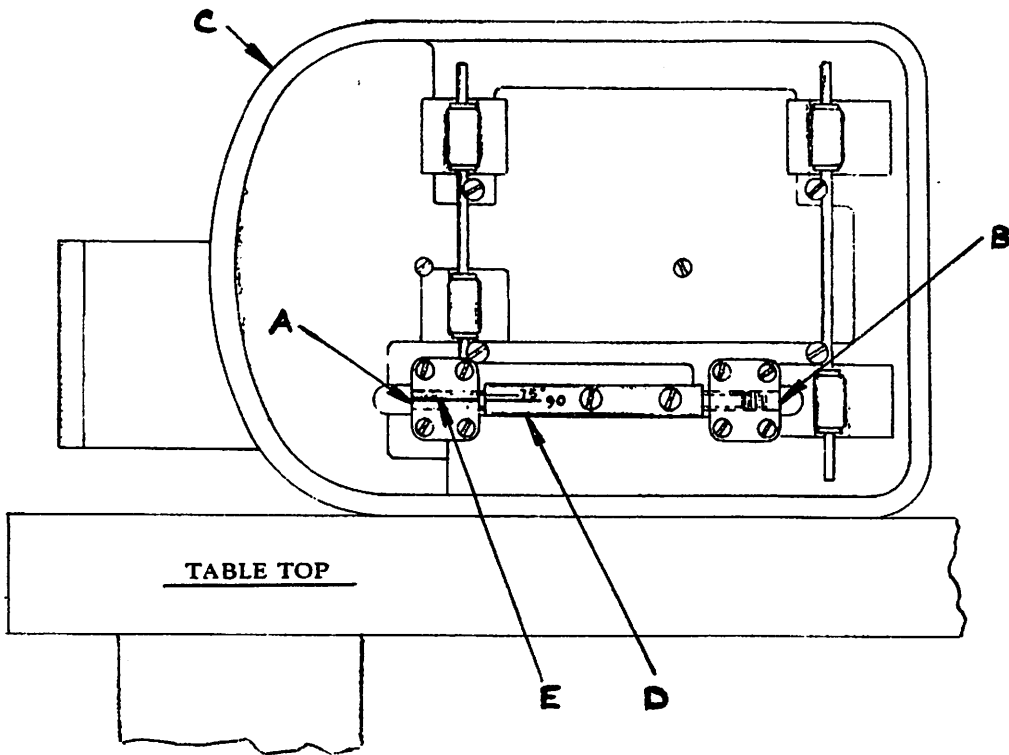


REFERENCE	PART NAME	PART No.
1B	Attachment, Complete	644C1-133
2B	Base Plate, with Rollers	505C2-66
3B	Front Roller, Complete	622C1-13
4B	Washer, Roller Shaft (8)	12C8-1
5B	Shaft, Front Roller	11C2-3
6B	Bearing, Roller (10 per roller)	41C2-7
7B	Screw, Clamp (4)	20C5-12
8B	Shaft, Rear Roller	11C2-14
9B	Shell, Roller (4)	61C1-5
10B	Rear Roller, Complete	619C1-8
11B	Screw, Flat Hd. (8)	8-32 x 1/2 F.H.
12B	Bracket, Base Plate (2)	62C16-193
13B	Shaft, Standard	11C12-75
14B	Screw, Round Hd. (2)	6-32 x 5/16 R.H.
15B	Screw, Socket Set (2)	20C13-31
16B	Wrench, Hex	529C1-11
17B	Plate, Gauge	79C12-191
18B	Gauge	141C1-34
19B	Screw, Adjusting	20C5-2
20B	Screw, Thumb (2)	20C7-10
21B	Roller	41C5-11
22B	Spacer, Roller (2)	55C4-73
23B	Shaft, Roller	11C12-76
24B	Ring, Retaining	18C6-18
25B	Screw, Round Hd. (2)	10-24 x 7/16 R.H.

NUMBER IN PARENTHESIS INDICATES NUMBER OF PARTS PER ASSEMBLY

*Please see back page of this folder for instructions on adjusting the bevel.*

# INSTRUCTIONS FOR ADJUSTING BEVEL



## TO ADJUST BEVEL

Place machine on its side with bottom of base plate facing you as shown. Loosen socket head screws "A" and "B" with hex wrench furnished with machine. These screws have right hand thread. Adjust base plate "C" to desired angle — graduations on shaft "D" indicate various angle settings. Adjust base plate until line "E" corresponds with desired angle setting on shaft "D". Tighten both screws "A" and "B" with hex wrench.