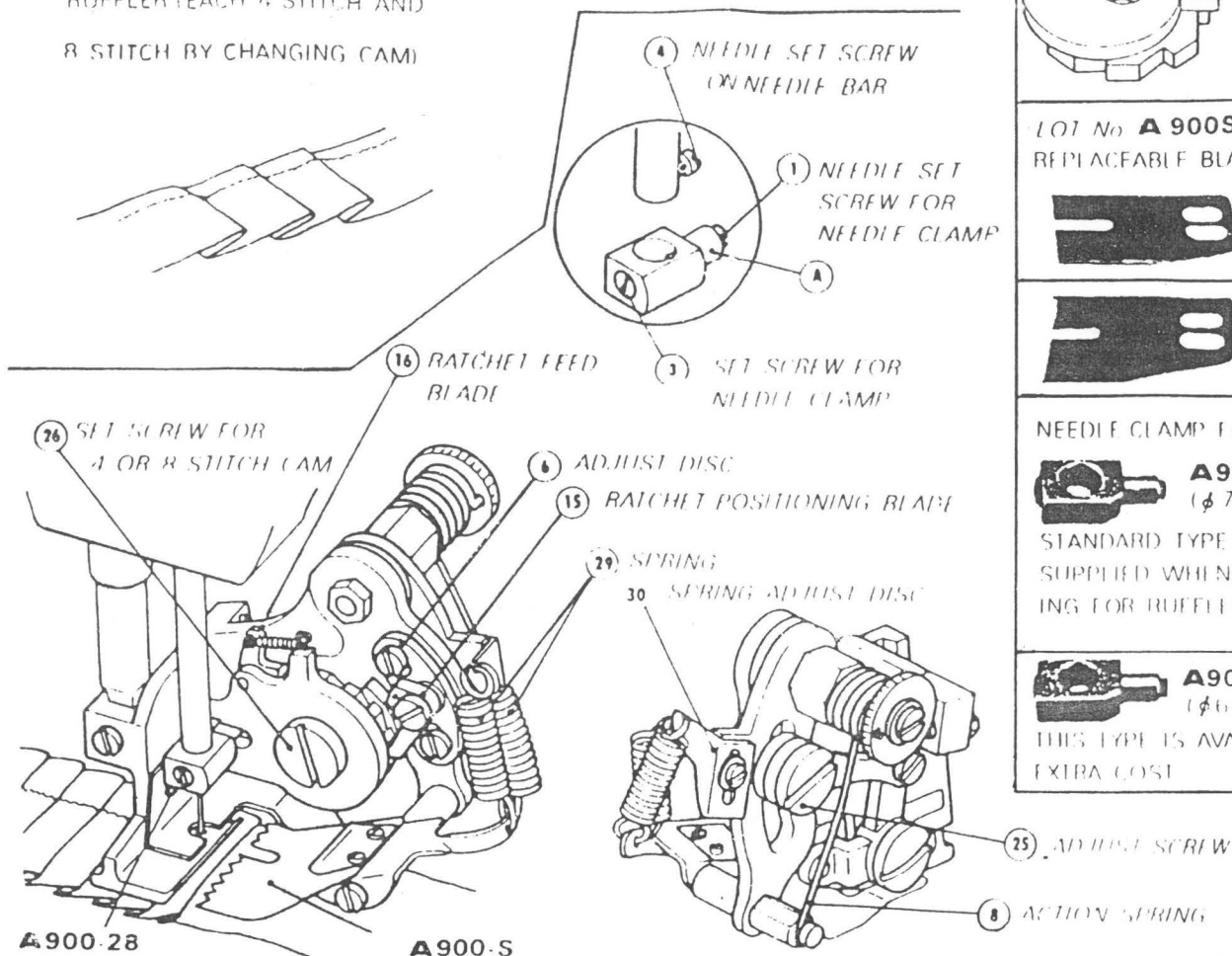


# RUFFLER ATTACHMENTS

LOT No **A 900**

RUFFLER (EACH 4 STITCH AND  
8 STITCH BY CHANGING CAM)



**A900-28**

**A900-S**

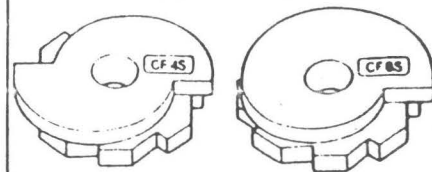
## HOW TO ATTACH

1. SEE THE SKETCH IN CIRCLE AND UNSCREW THE ① NEEDLE SET SCREW
2. ATTACH A900-28 NEEDLE CLAMP DESIGNED EXCLUSIVELY FOR G900 RUFFLER ON TO NEEDLE BAR IN SUCH MANNER THAT YOU SEE THE PORTION MARKED 'A' AT RIGHT TOWARDS SEWING MACHINE
3. TIGHTEN THE ① NEEDLE SET SCREW SLIGHTLY AND SET FIRMLY THE NEEDLE CLAMP BY THE ② NEEDLE CLAMP SET SCREW
4. ATTACH A900 RUFFLER ON TO PRESSER BAR LIKE YOU SET PRESSER FOOT
5. LOOSEN THE ③ SCREW A BIT AND INSERT NEEDLE FOR SEWING

## ADJUSTMENT

1. IT IS ADVISABLE THAT YOU ADJUST A THREAD TENSION A BIT TIGHTER THAN FOR REGULAR SEWING
2. FEEDING AMOUNT FOR RUFFLING CAN BE ADJUSTED BY SLIDING ④ SCREW TO UPWARD OR TO DOWNWARD (YOU CAN OBTAIN UP TO APPROX. 10mm RUFFLING BY SLIDING DOWN)
3. OBTAIN DESIREABLE DISTANCE BETWEEN RUFFLE AND RUFFLE BY ADJUSTING FEEDING AMOUNT FEED DOG
4. WHEN A900S BLADE DOES NOT FEED PROPERLY MAKE SURE THAT THE RATCHET POSITIONING BLADE IS NOT SLIPPING IN THE CASE SLIDE THE ⑤ ADJUST DISC EITHER TO UPWARD OR TO DOWNWARD TO PROPER POSITION
5. DRAIN JUST A BIT OIL FROM TIME TO TIME TO THE PORTIONS ARROWED

CAM  
FOR 4 STITCH FOR 8 STITCH



LOT No **A 900S**  
REPLACABLE BLADE

**THIN BLADE**  
0.2mm

**THICK BLADE**  
0.5mm

NEEDLE CLAMP FOR A900

**A900-28**  
(φ 724)

STANDARD TYPE AND BEING  
SUPPLIED WHENEVER ORDERING  
FOR RUFFLING

**A900-28A**  
(φ 635)

THIS TYPE IS AVAILABLE AT  
EXTRA COST

## Important

When using the ruffler attachment, the machines are recommended to be run at 600-900 stitches per minute to avoid skipped stitches.