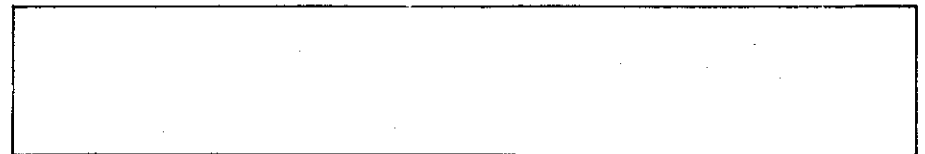
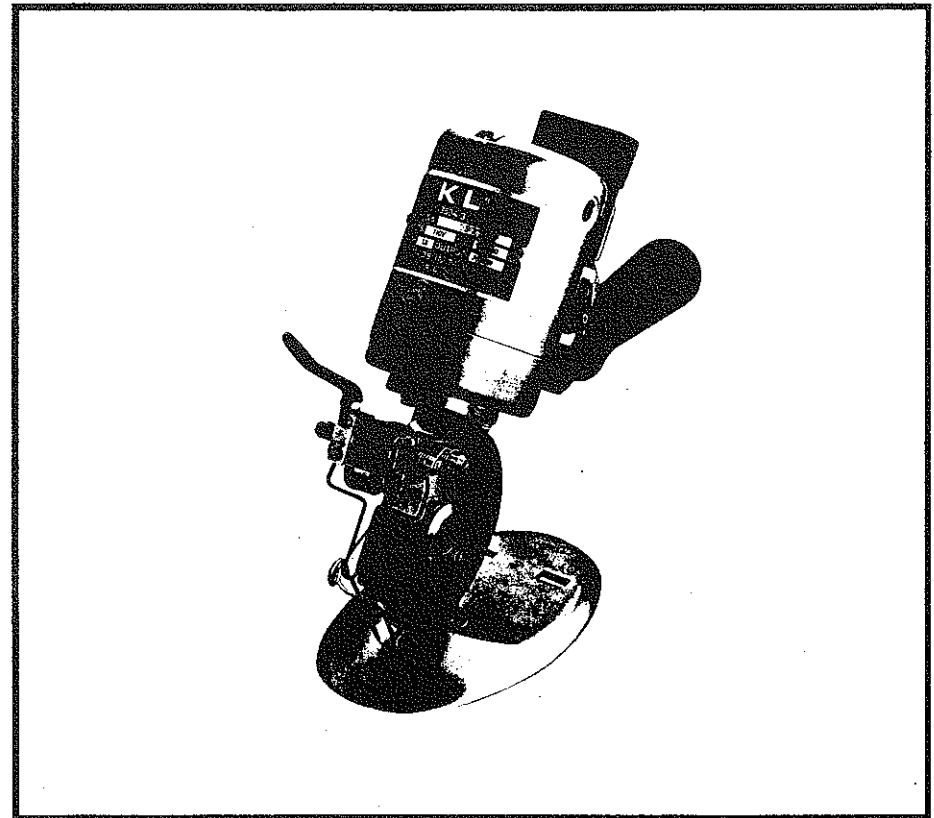


CUTTING MACHINE
KL [®] mod. 350A
Instructions & Parts List



Instructions

EMERY Cutters are precision tools, made by master craftsmen.

In order to maintain this precision and the adjustments which are essential to satisfactory operation of your cutter, it is important to conscientiously follow these instructions.

1. In General

Handle cutter with great care. Do not drop it or handle it roughly as this will change its adjustments and may cause serious damage to the mechanism.

2. Prior to Starting the Cutting Operation

Screw the separately packed handle on to the machine. After this, set the "ON/OFF" switch to the "off" position, connect the female plug of the electric cord with the machine terminal and then tighten the screw on the female plug. Now connect the male plug of the electric cord to the electrical outlet. Prior to starting the cutting operation remove any obstacles from the path of the base plate.

3. Cutting Operation

Do not force cutter through material. By nature of their texture and because of the properties of their fibres, not all materials can be cut with the same speed or ease. Trial cutting will readily let you find the best speed at which the machine is to be advanced through the material.

4. Knife Sharpening

Never try to cut with a dull knife blade. This will result in a rough cut. Grind the knife as soon as the appearance of the cut edge is no longer satisfactory. When grinding the knife blade, do not force grinder into the blade. Rather have grinding wheels touch the knife lightly for the purpose of honing the cutting edge.

Thus, while the knife is rotating push the sharpener lever down for a few seconds so that the emery lightly touches and grinds the knife.

After a new knife blade has been installed in the machine, somewhat more intensive grinding may be required to produce a keen cutting edge.

Important Note: Before doing any work on the machine, be sure to disconnect the machine from the electrical outlet.

5. Knife Installation

When the cutting edge of the knife does not enter the cutting groove on the bed, the knife should be replaced. Remove the used blade from the machine by inserting the pins of the knife retaining spanner into the knife retaining nut and turning counter-clockwise.

If the knife retaining nut is tight and difficult to loosen, stop the blade from turning by holding it securely with a flat eraser or a similar rubber article placed between it and your fingers. Be sure to protect your fingers against injury.

To insert a new knife, the order is reverse of the above. Be sure that the new knife is inserted correctly by fitting the knife's cutting edge.

6. Grinder Adjustment and Installation

Adjustment of the grindstones may be necessary on occasion because of wear or because they have been knocked out of adjustment.

First, loosen four grinder pins so that the grinder adjusting screw is free to move. Then press the grinder bracket so that the grinding stone is almost touching the knife, and screw the adjusting screw. Now screw all four grinder pins into place. Set the stones so that the clearance between the stones is maintained at about 1.0mm.

Replacement of the grinders can be accomplished by removing the four grinder pins and grinder adjusting screw and then inserting new stones and setting same as described above.

7. Maintenance and Inspection

Keep machine clean by removing all accumulations of lint, thread and cuttings from around the knife and the base plate slot. On occasion, remove knife itself to clean away from behind it any accumulated foreign matter.

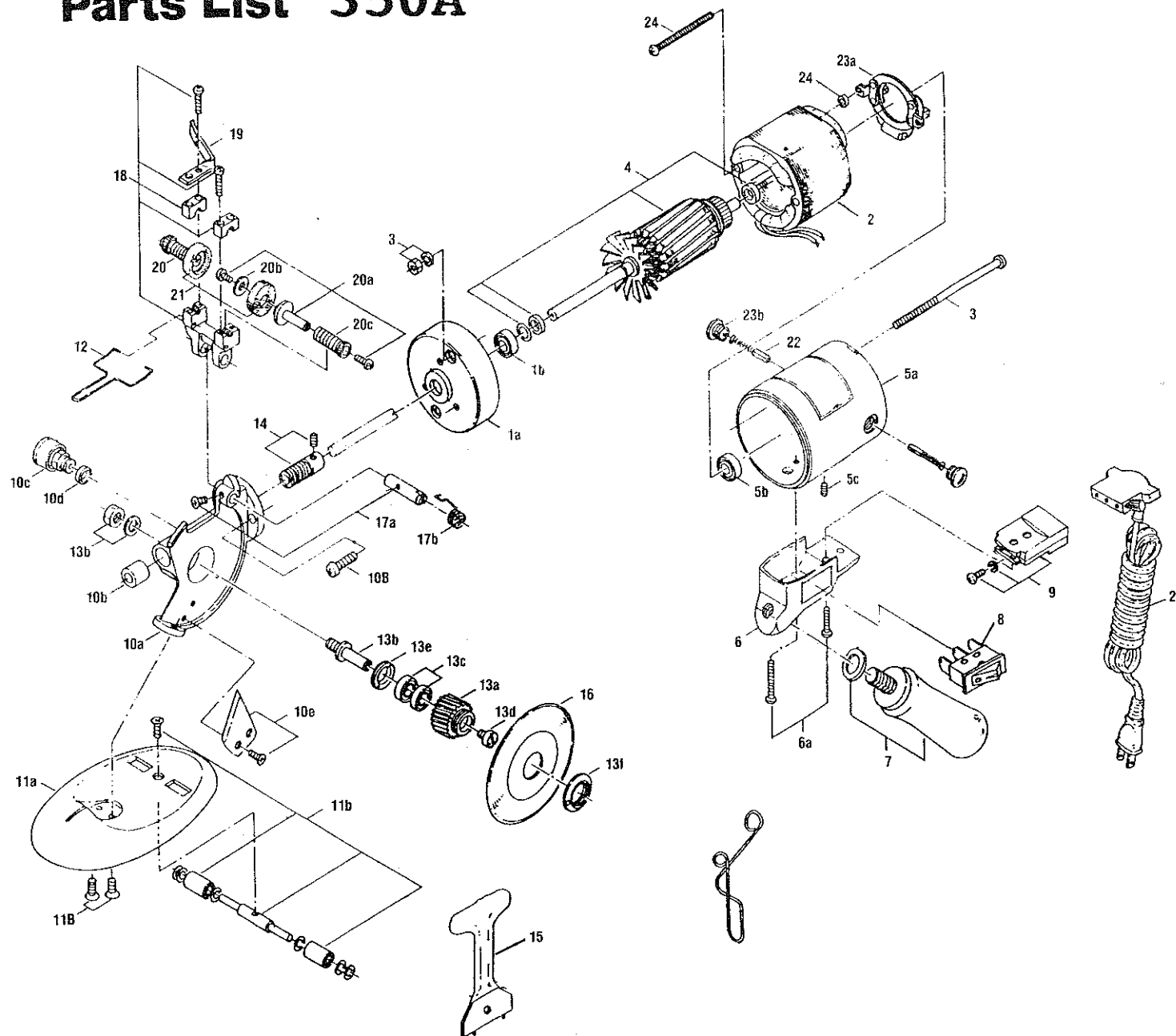
In addition, add grease to the grease cup monthly using the special grease that is supplied with the machine.

From time to time, check the right and left carbon brushes and replace when necessary. (P-291).

Caution! It is recommended that the machine be turned off when not in use.

KL[®]

Parts List 350A



Part Number	Part Name	Q'ty
350A-01	Motor front cover with ball bearing	1 set
350A-01a	Front cover	1 pc
350A-01b	Ball bearing (#626 ZZ)	1 pc
350A-02	Motor field (stator)	1 pc
350A-03	Motor cover fixed screw, washer & nut	2 pc
350A-04	Rotor (armature) with washer & Collar	1 set
350A-05	Motor rear cover with ball bearing & screw	1 set
350A-05a	Rear cover	1 pc
350A-05b	Ball bearing (#626 ZZ)	1 pc
350A-05c	Screw	2 pc
350A-06	Switch box	1 pc
350A-06a	Switch box fixed screw	3 pc
350A-07	Operating handle & washer	1 set
350A-08	Switch	1 set
350A-09	Terminal block	1 set
350A-10	Stand (gear box) assembly	1 set
350A-10a	Stand (gear box)	1 pc
350A-10b	Bushing	1 pc
350A-10c	Grease cap	1 pc
350A-10d	Collar	1 pc
350A-10e	Knife slide & screw	1 set
350A-10B	Screw	3 pc
350A-11	Base plate with roller	1 set
350A-11a	Base plate	1 pc
350A-11b	Roller complete	1 set
350A-11B	Screw	2 pc
350A-12	Finger guard	1 pc
350A-13	Worm gear assembly	1 set
350A-13a	Worm gear	1 pc
350A-13b	Stud with washer & nut	1 set
350A-13c	Ball bearing (#626 ZZ)	2 pc
350A-13d	Screw for stud	1 pc
350A-13e	Ball bearing retaining nut	1 pc
350A-13f	Knife retaining nut	1 pc
350A-14	Worm & screw	1 set
350A-15	Knife retaining spanner	1 pc
350A-16	Knife (blade) 3-1/2" diameter	1 pc
350A-17	Pin, screw & spring for stand	1 set
350A-17a	Pin & screw	1 set
350A-17b	Spring	1 pc
350A-18	Grinder bracket & screw	1 set
350A-19	Sharpening lever	1 pc
350A-20	Stud, screw, washer & pipe screw	2 set
350A-20a	Stud & screw	2 set
350A-20b	Washer	2 pc
350A-20c	Pipe screw	2 pc
350A-21	Emery (sharpening stone)	2 pc
350A-22	Carbon brush	2 pc
350A-23	Carbon brush holder & cap	1 set
350A-23a	Carbon brush holder	1 pc
350A-23b	Carbon brush cap	2 pc
350A-24	Carbon brush holder fixed screw & collar	2 set
350A-25	Electric cord (length 10 feet) with connecting plug	1 set